

THIS MAP IS FOR THE PURPOSE
OF AS VALUATION TAXATION ONLY.

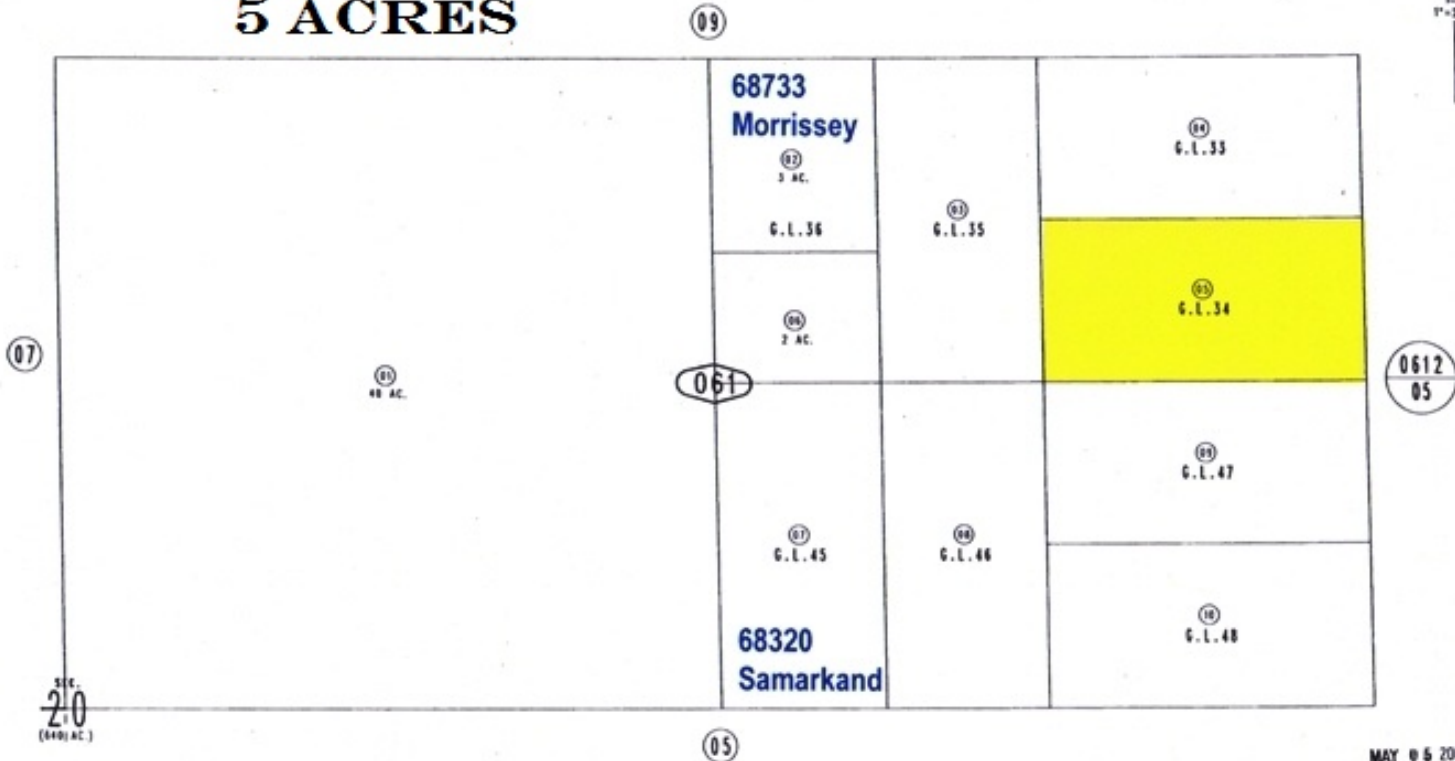
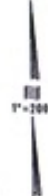
S.1/2, N.E.1/4 Sec.20, T.1N.,R.8E., S.B.B.&M.

City of Twentynine Palms 0609-06
Tax Rate Area
19001



Morrissey Mountain
0609-061-05
5 ACRES

Twentynine Palms 92277



February 2005

DesertLand.com
760-327-4842

Assessor's Map
Book 0609 Page 06
San Bernardino County
MAY 05 2005
REVISED